

SENKKI 90



Puhdistaminen

Pehmeällä kankaalla tai paperilla ja lievästi emäksisellä puhdistusaineella. Vaikeimmat tahrat voidaan poistaa alkoholia sisältävällä puhdistusaineella.

Materiaali-info

Standardin EN 312:2003 vaatimukset täyttävä kalustelevy.
Formaldehydiluookka: Class E1 EN 312:2003
Pintamateriaaliluokitus: M1 rakennusmateriaalin päästöluokka.

Valmistaja

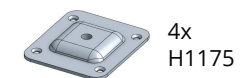
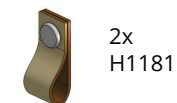
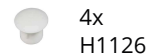
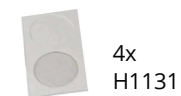
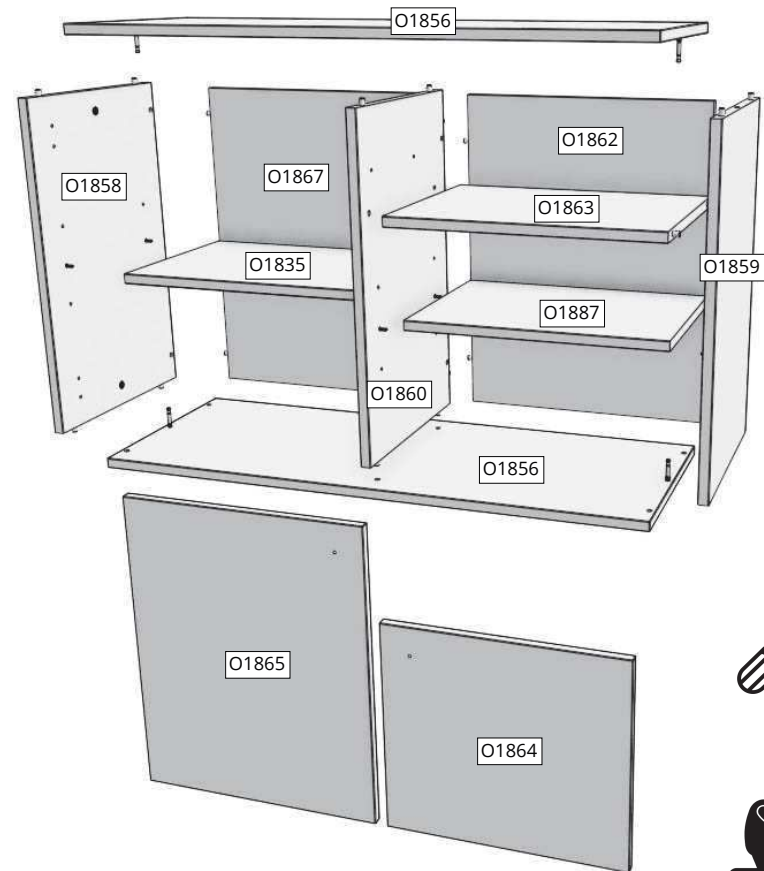
Rintaluoma Oy
Huonekalutehdas
www.rintaluoma.fi

 asiakaspalvelu@rintaluoma.com

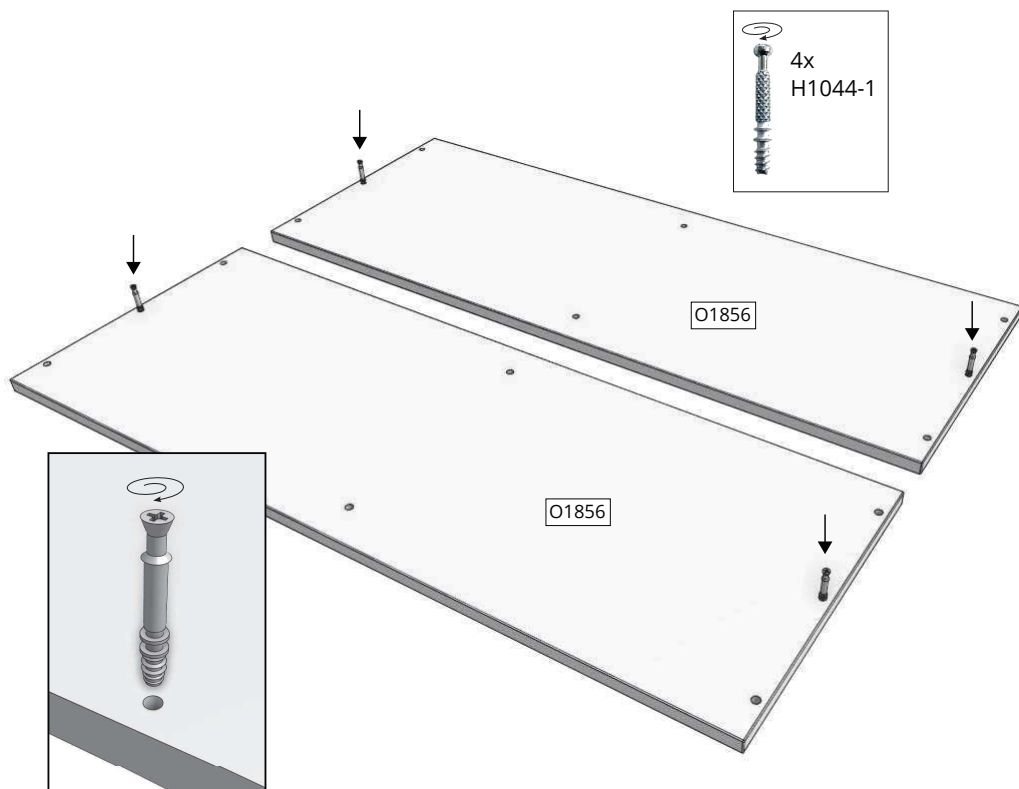
 facebook.com/rintaluoma

 @rintaluomafi

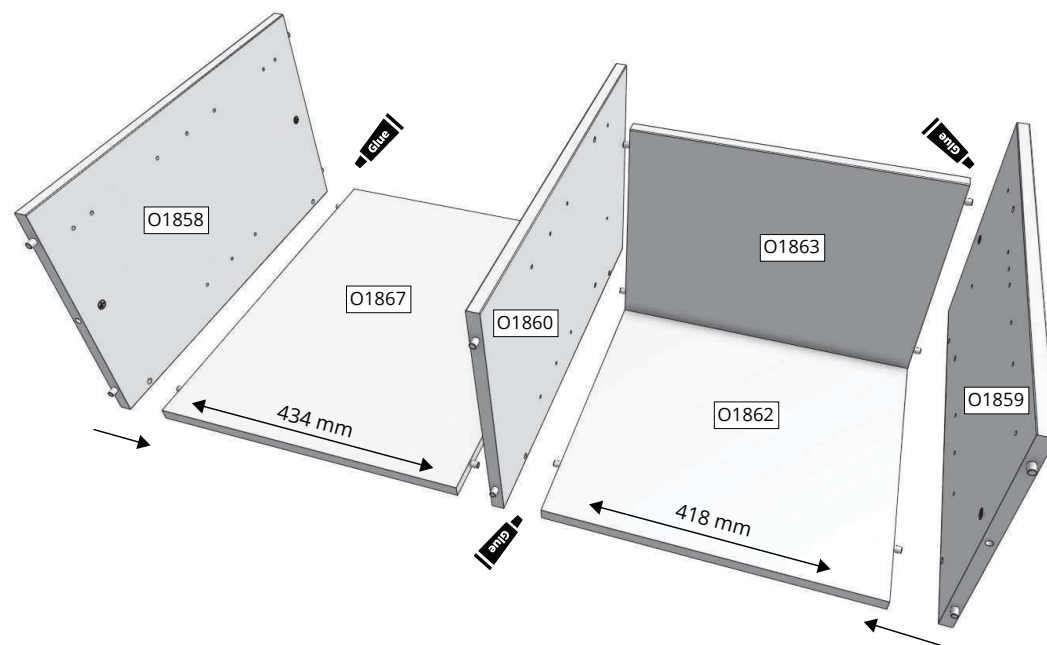
HUONEKALUTEHDAS
RINTALUOMA
www.rintaluoma.fi



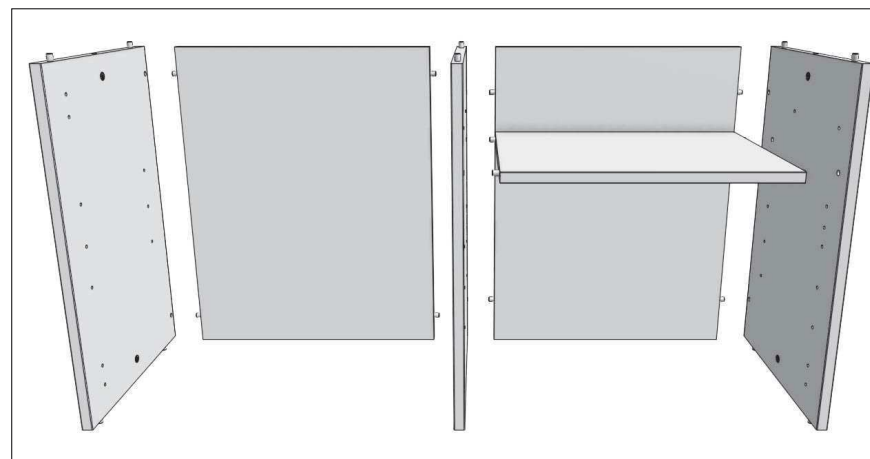
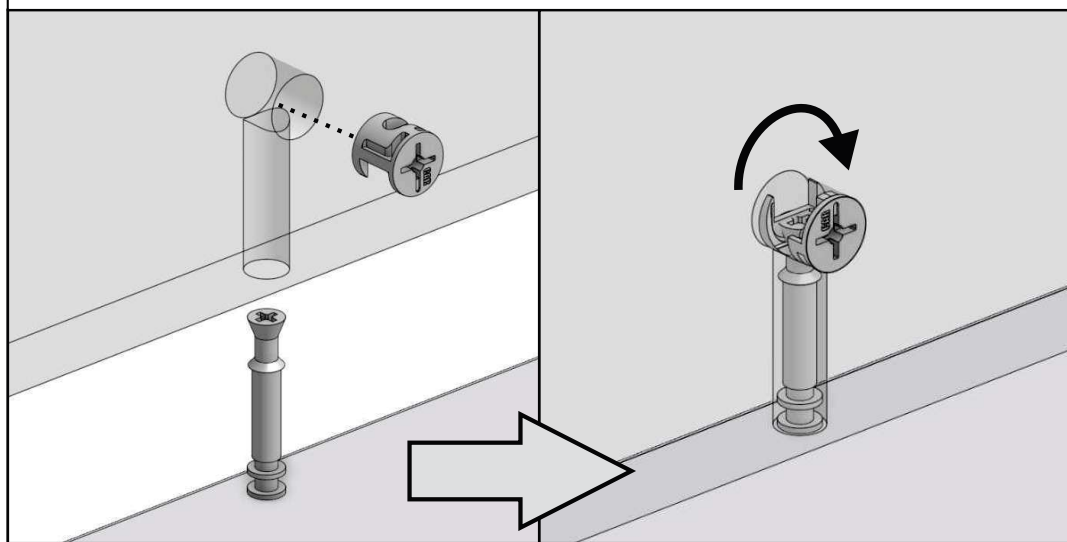
1



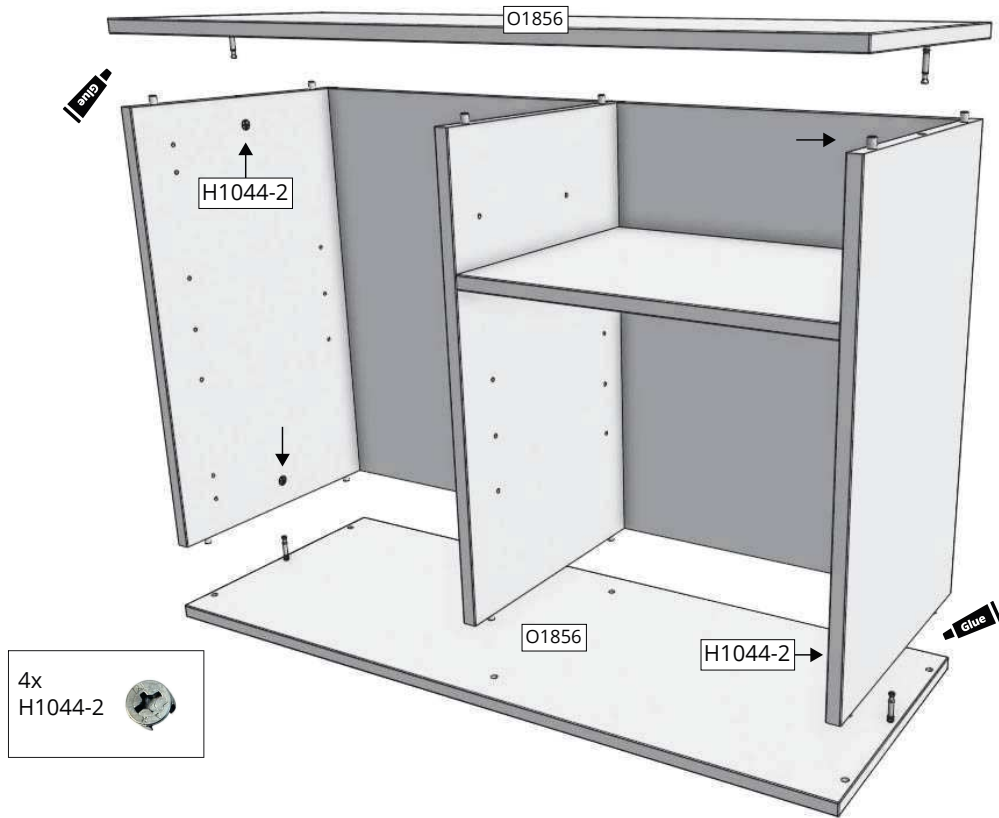
2



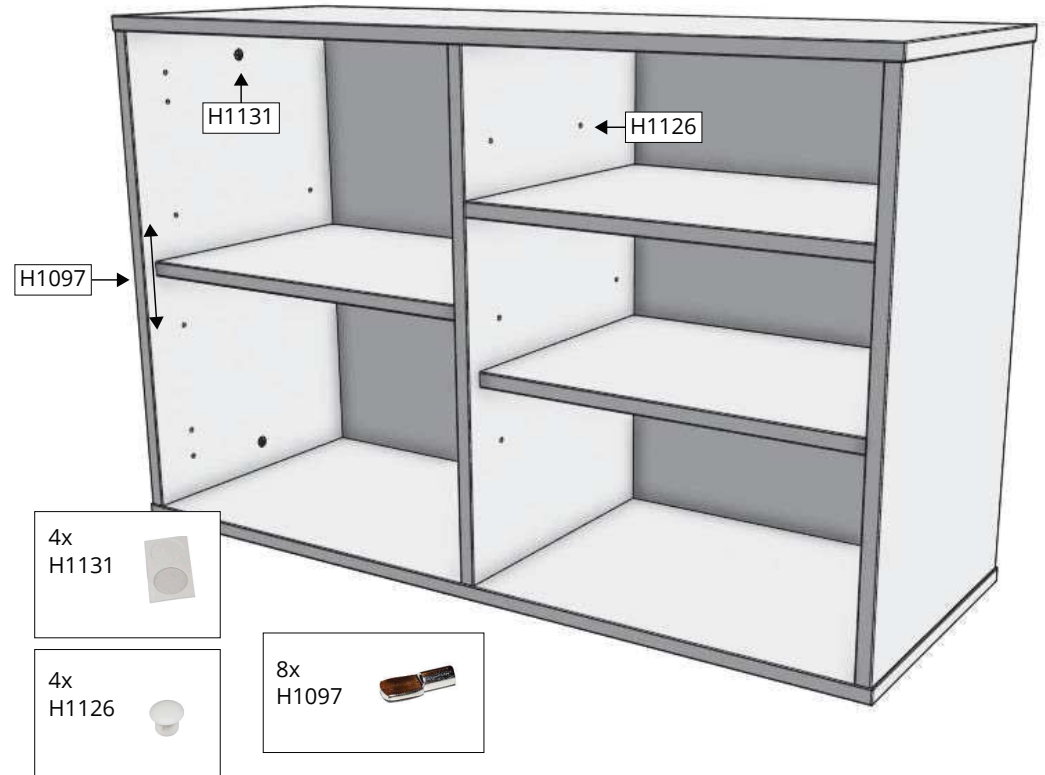
Minifix (H1044-1 & H1044-2)



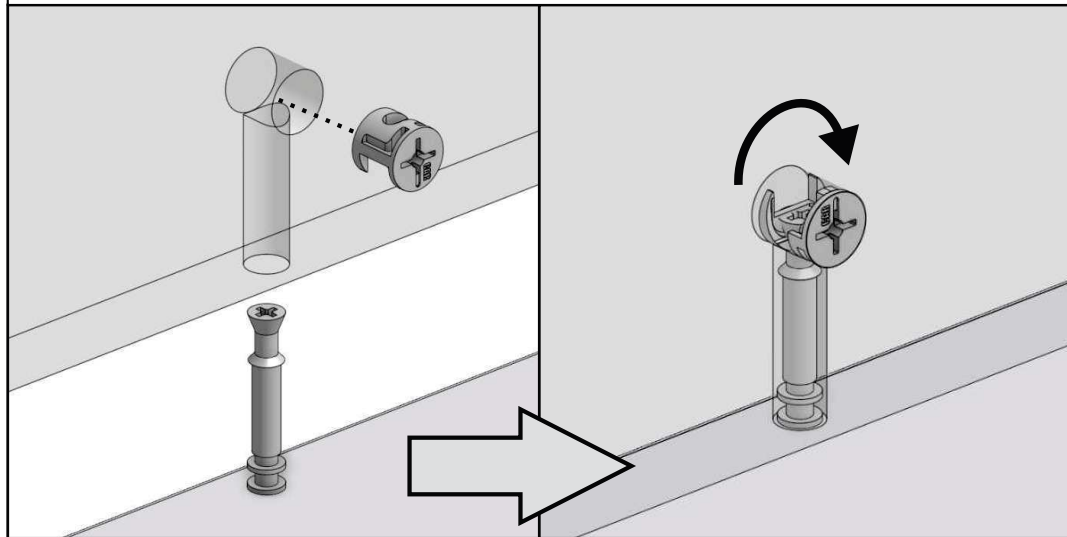
3



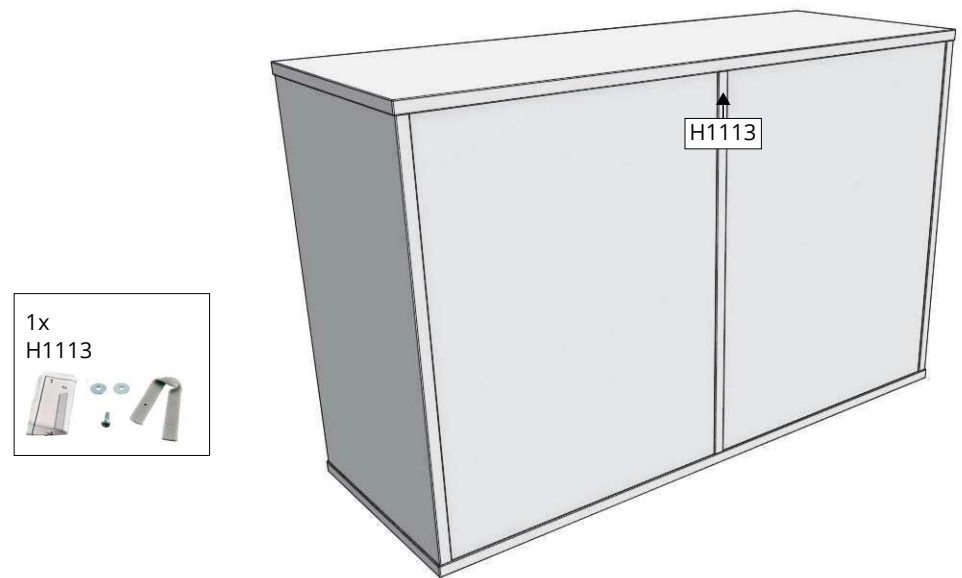
4



Minifix (H1044-1 & H1044-2)

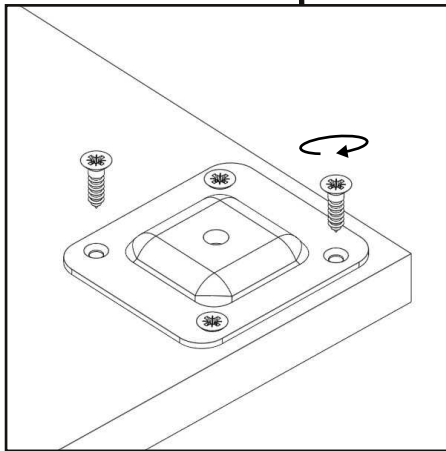
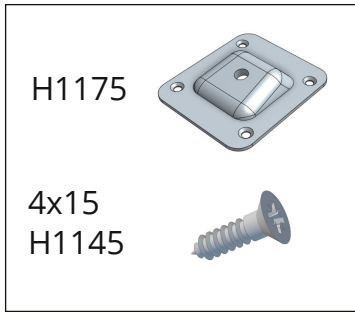
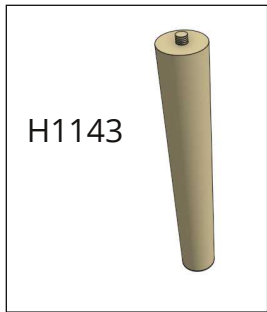
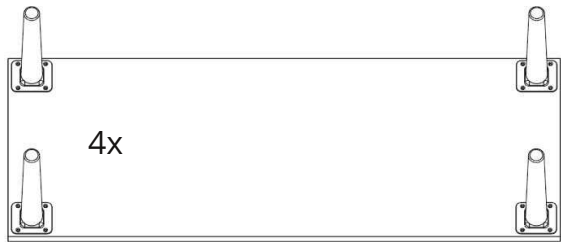
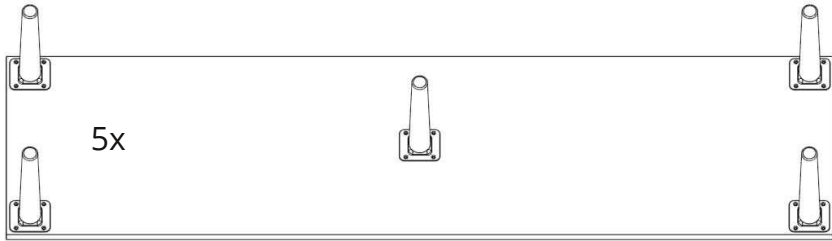


5

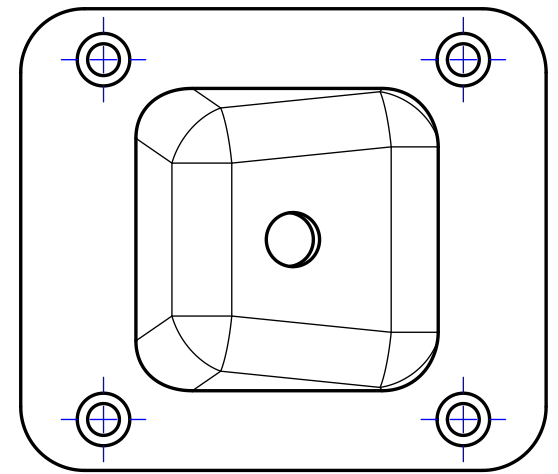


KALUSTEJALKA ASENNUS SUORA

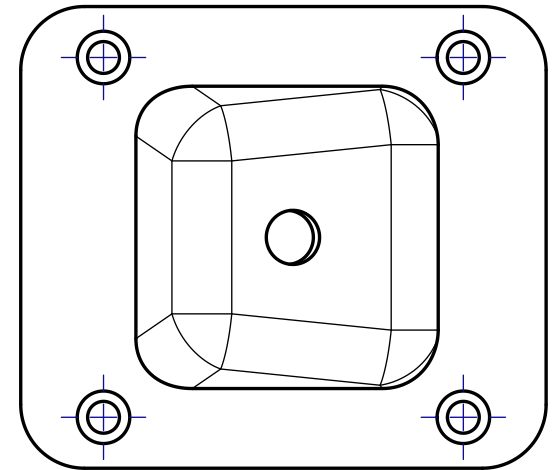
H1143, H1171, H1172, H1175



Reuna
Edge



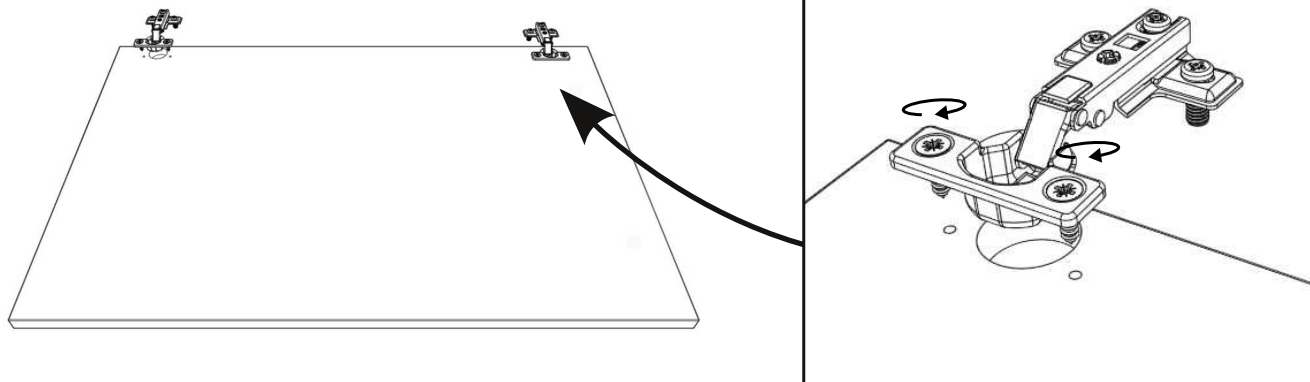
Asennusmalli
Installation template



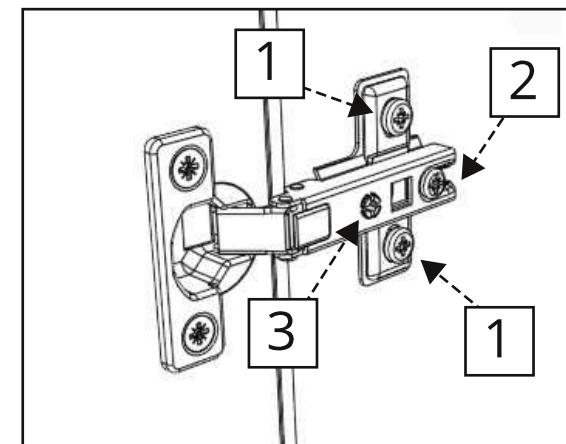
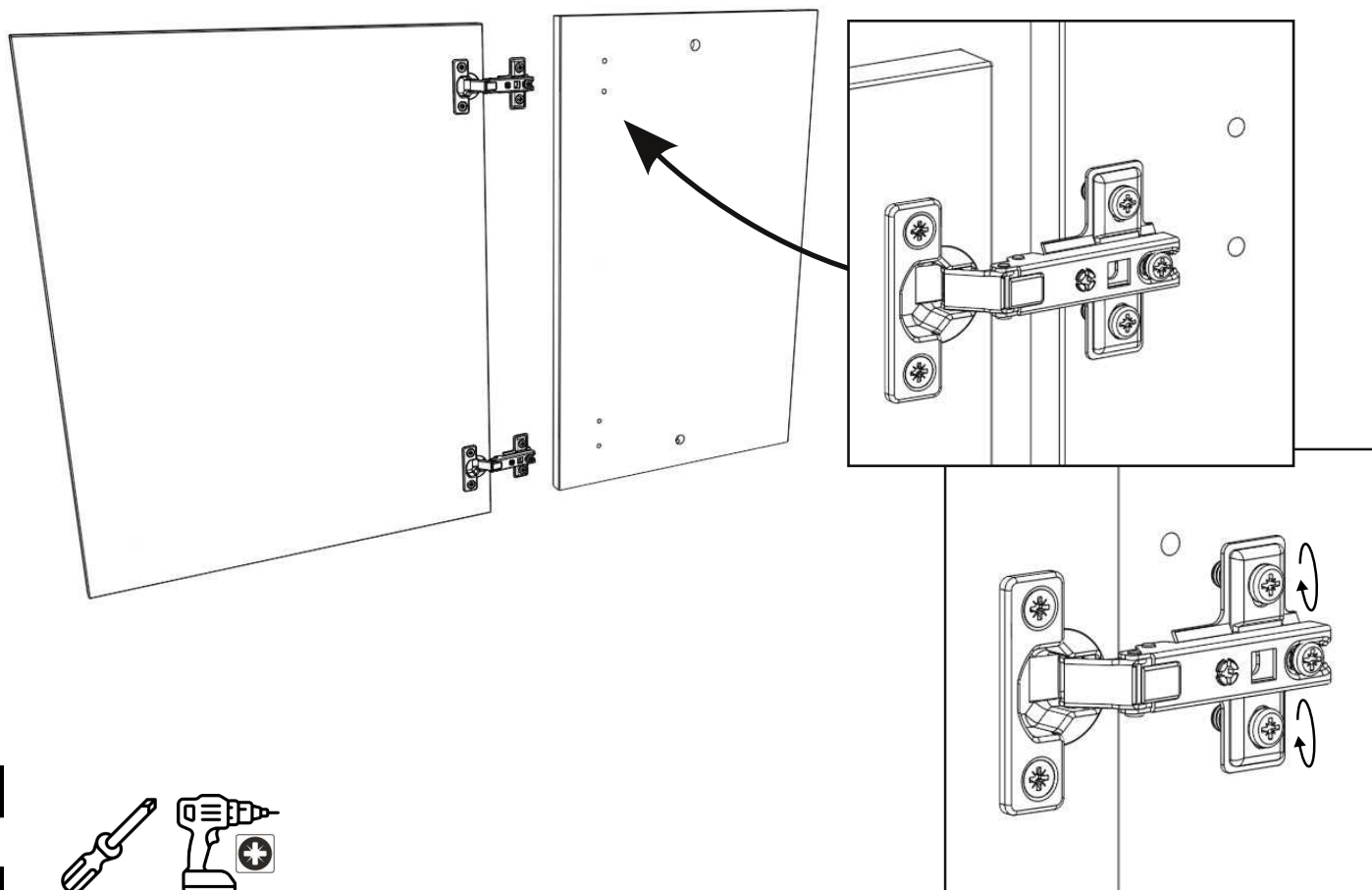
SARANA & OVI ASENNUS

H1051, H1064, H1065

1.



2.



FI

Säätö pystysuunnassa:

Avaa kaikkien saranoiden kiinnitysruuveja (1).

Nosta tai laske ovea ja kiristä ruuvit huolellisesti

Säätö syvyys suunnassa:

Avaa lukitusruuvia (2).

Korjaa oven asentoa.

Kiristä lukitusruuvi (2).

Säätö vaakasuunnassa tai kallistus:

Avaa lukitusruuvia (2).

Korjaa oven asentoa säätöruuvista (3).

Kiristä lukitusruuvi (2).

ENG

Vertical adjustment:

Open all hinge mounting screws (1).

Raise or lower the door and tighten the screws carefully.

Depth adjustment:

Open the locking screw (2).

Adjust the position of the door.

Tighten the locking screw (2).

Horizontal adjustment or tilt:

Open the locking screw (2).

Adjust the position of the door with the adjustment screw (3).

Tighten the locking screw (2).

SWE

Vertikal justering:

Öppna alla gängjärnens fästskruvar (1).

Höj eller sänk dörren och spänn fast skruvarna.

Justera djupled:

Öppna låsskruven (2).

Korriger dörrens position.

Spänn fast låsskruven (2).

Horisontell justering:

Öppna låsskruven (2).

Korriger dörrens position med justeringskruv (3).

Spänn fast låsskruven (2).

