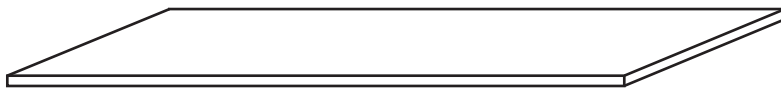
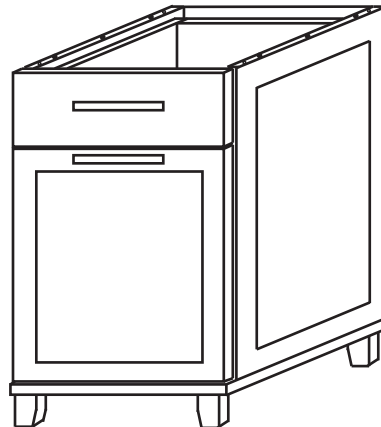


PACKAGE CONTAINS:



Desk top - 1 pcs



Drawer box - 2 pcs



Wooden dowel - 12 pcs



Eccentric connecting fitting - 8 pcs



Screw-dowel - 8 pcs

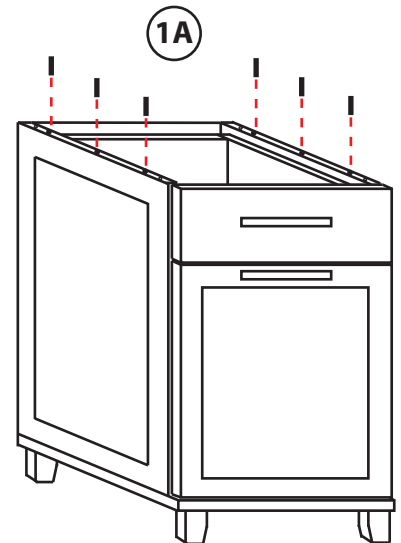
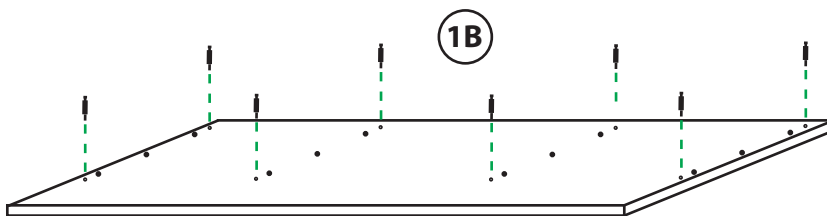


Screw - 4 pcs

1. STEP

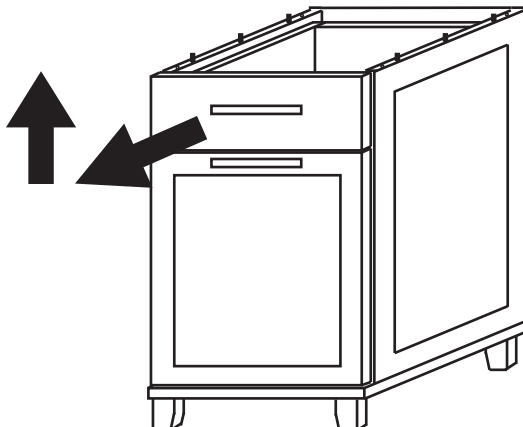
1A. Attach wooden dowels on top of drawer boxes (6 pcs each box)

1B. Attach screw-dowels using screwdriver on the bottom of table top (8 pcs)



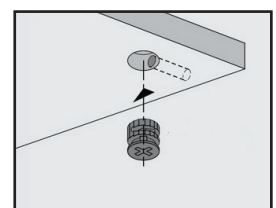
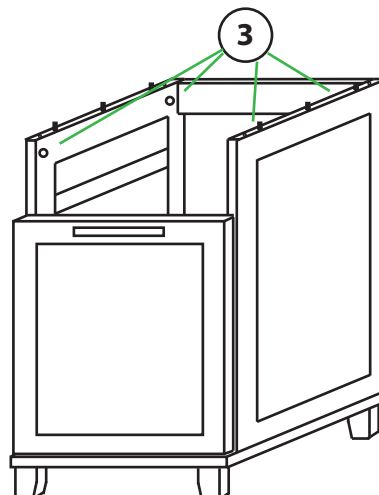
2. STEP

Take off drawers from drawer boxes.
Pull out, then up.



3. STEP

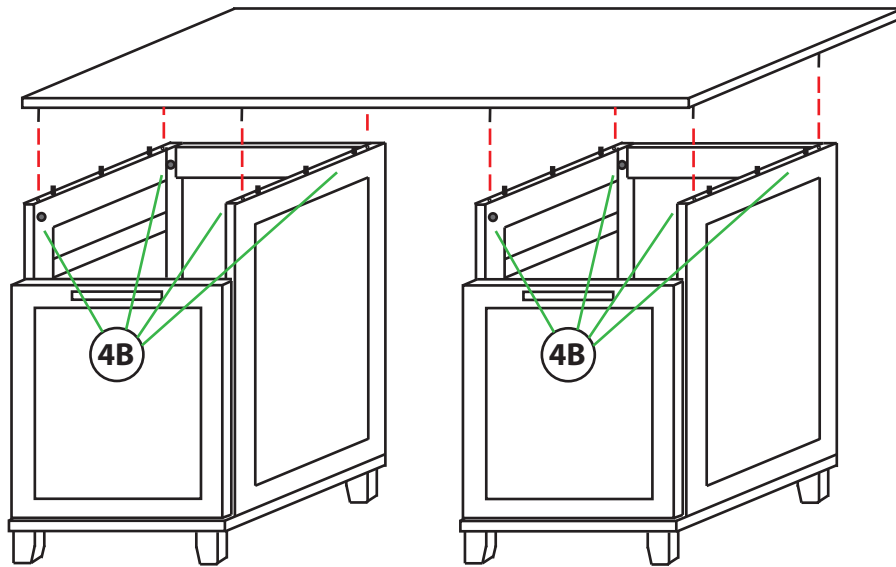
Insert eccentric connecting fittings,
4 pcs to each drawer box.



4. STEP

4A. Attach table top above drawer boxes.

4B. Turn eccentric connecting fittings clockwise. (8 pcs)

**6. STEP**

Insert drawers back to the drawer boxes
and fix it from the bottom with screws (3,5 x 15 mm, one pcs each side).

**7. STEP**

Turn handles from box inside side to the right position.

